



# Green Earth

World Class Timber Flooring

## *Installation Instruction*

### **Surface preparation**

Green Earth Floor can be installed on most existing floors, eg. wooden floors, PVC, concrete floors. Soft long-piled wall-to-wall carpets should be removed. Make sure that the surface is level, dry and even (< 4 mm per 2 m). The supporting floor needs to be thoroughly dried.

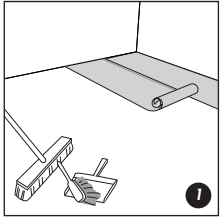
- Wooden and woodbased materials max 50% relative humidity;
- Concrete and light concrete floor max 85% relative humidity (max 2,0% CM);
- Plaster and plasterbased floor max 0,5% CM

All types of concrete floors, light concrete floors or ceramics demand a damp barrier. Use a plastic foil of at least 0,2 mm thickness. The foil must be applied with a minimum of 20 cm overlap, taped and turned up against the walls, and clean-cut once the floor is installed. You also need an underlay material with a thickness of min 1-3 mm. Ideally the Golden Field Excellence underlay. Please consult your dealer on this subject.

### **Preliminary instructions**

Keep the boards in room temperature for at least 48 hours in unopened package before you start the installation. The room temperature must be at least 18°C before and during installation. For floor surfaces exceeding 100 m<sup>2</sup> and/or lengths exceeding 10 m and overlaps to new rooms and floor surfaces which do not join symmetrically, use expansion joints to divide the floor sections.

# Installing Green Earth laminate flooring



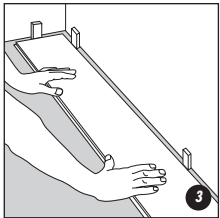
## Step 1.

**BEFORE YOU START :** Check the Floor boards and make sure that the surface has no transport damaging before you start. After cleaning the subfloor you can roll over the plastic foil and underlay material. The plastic foil has to overlap minimum 20 cm.



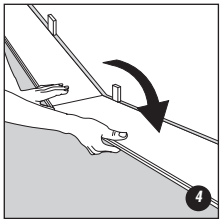
## Step 2.

**DOOR MOULDINGS AND SKIRTINGS :** lay a board (with the decorative side down) next to the door moulding and saw as shown in the figure. Then slide the floor board under the moulding.



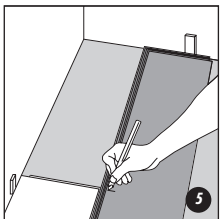
## Step 3.

**FIRST ROW :** Begin laying in the left- hand corner, tongue-side against the wall. Make sure you are placing the short side of the board 8- 10 mm from the wall. The long side distance can be pushed into place when three rows have been place (Mind distance of 8- 10 mm). If the wall is uneven, the floorboards must be adapted to its contours. Remove the first row. Cut the floorboards as required and then relay them by sliding them in at an angle under the floorboards that are already in position.



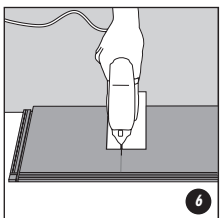
## Step 4.

**END SECTION :** Press the end section of the next floorboard at an angle to the first one, then lay down. Complete the first row in the same matter.



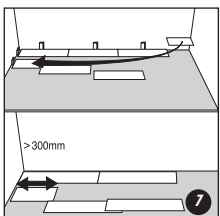
## Step 5.

Place the final floorboard face down and the short side without the locking strip towards the wall. The distance to the wall must be 8- 10 mm. Mark where the floorboard is to be cut.



## Step 6.

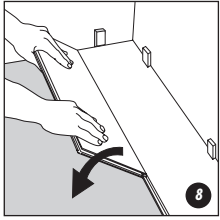
**CUTTING THE FLOORBOARDS :** Place the floorboard face down on the work surface and cut to size using a jig- saw. Use a fine-toothed type if you are using a hand saw. In this case cut the floorboards face up.



## Step 7.

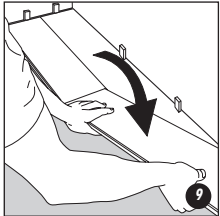
**PSTARTING THE SECOND ROW :** Use a cut piece of board from the previous row to start the next row. This must be at least 30 cm long. If this piece is too short start with a new board cut in half. Always ensure that the end joints are staggered at least 30 cm.

# Installing Green Earth laminate flooring



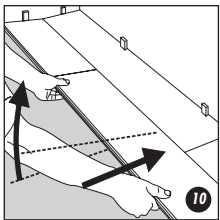
## Step 8.

**CONTINUE LAYING THE FLOOR :** Place the floorboard at an angle against the floorboard in the previous row, press forward and fold down at the same time.



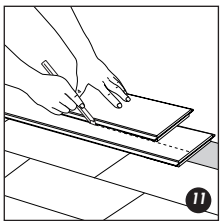
## Step 9.

Place the short end of the floorboard at an angle against the previous installed floorboard and fold down. Ensure that the board is positioned on the integral locking strip of the floorboard in the previous row.



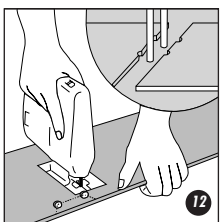
## Step 10.

Lift the floorboard (together with the previous laid in the same row) slightly up (about 30 mm) and push it against the row in front. Put it down when the floorboards are positioned tightly together.



## Step 11.

To lay the last row: measure and cut the board. Leave 8- 10 mm to the wall.



## Step 12.

Holes for pipes: measure the diameter of the pipe and drill a hole that is 10 mm larger. Saw off a piece as

Follow the instructions given by your floor heating supplier. In addition for our product we ask you also to note: Always use 0,2 mm plastic foil (damp insulation) underneath floor board when underfloor heating is used. The floor heating should have been turned off for 2-3 days, and have room temperature when starting the installation. **NOTE!** Maximum floor surface temperature 28°C, we recommend in case of an electrical floor heating system the heating not to exceed 60W/m<sup>2</sup>. There cannot be hot or cold areas within the same floor. Please note that if loose carpets/rugs are used, the temperature underneath may exceed recommended maximum temperature. Starting-up the floor heating after installation: The first week the heating may be left on low temperature (16-20°C). The following week the heating may be adjusted according to suppliers recommendations and according to the above mentioned restrictions.