

LAYING INSTRUCTION FOR 5G, GLUELESS MECHANICAL LOCKING SYSTEM FOR ENGINEERED HARDWOOD FLOORING

PREPARATION

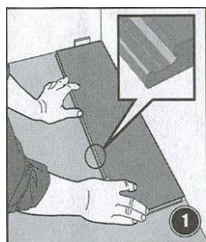
1. Measure the room, so that the quantity of parquet required is known. If the last board required is too narrow in width, it may be necessary to install length-wise cut boards on both sides of the room to give it an overall balanced look,
2. The parquet should be given sufficient time to acclimatize by not opening the packaging in the room where they are to be installed.
3. Each parquet should be inspected to ensure that the quality is acceptable. No claims relating to surface defects can be accepted after installation.
4. Ensure that the floor will fit under doors and skirting strips. Existing skirting strips may have to be removed during installation to allow for the expansion perimeter.
5. Ideally, the parquet should be installed along the longest dimension of the room and in a square room, the long joints should follow the path of the incoming light.
6. At all times, the temperature in the room should be between 18-24°C and the recommended relative humidity in the room should be in the range of 45-60% Use a humidifier if the relative humidity drops.

Note: As a natural material, timber is prone to movement with variations in moisture content, heat and relative humidity in the environment. As a guide, please allow the expansion perimeter of the floor gaps to be at least 2mm at each end per running meter of the parquet. For example an 8 meter long floor will need a 16mm expansion joint at each end.

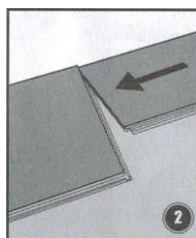
SUE-FLOOR

1. Sub-floor surfaces must be dry and level. Suitable surfaces include concrete, particleboard, wood floors, both ceramic and vinyl tiles and possibly others. Please consult your flooring specialist.
2. For uneven floors, compounds must be used to even out abrupt variations. If needed, you may contact your dealer or parquet-layer for further assistance.
3. If the parquet is not glued to the sub-floor, it is necessary to use damping material, for example 2-3mm of polyethylene foam to lay underneath the parquet. For pavement, it is advisable to use a damping foil of about 0.2mm in addition to polyethylene-foam. For proper handling, please contact your dealer.

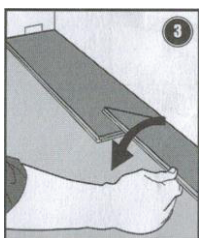
INSTALLATION



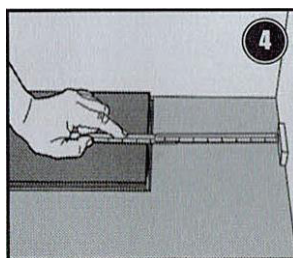
1. First plank, first row.
Place a distance of 10 mm thickness to the left and position the plank against the wall.
After 3 rows have been laid, you can easily position the flooring against the front wall with distances of 10 mm.



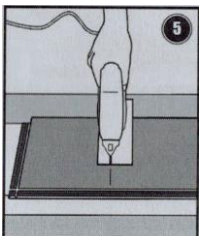
2. Second plank, first row
Place this plank gently and tight to the short end of the first one.



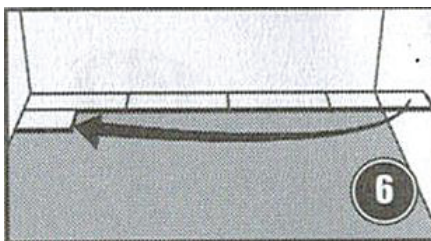
3. Fold the panel down in a single action movement. During the fold down, make sure the panels are tight against each other.
Afterwards press or slightly knock at the short end just installed.



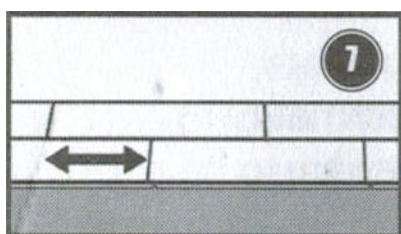
4. At the end of the first row,
Put a distance of 0 mm to the wall and measure the length of the last plank to fit.



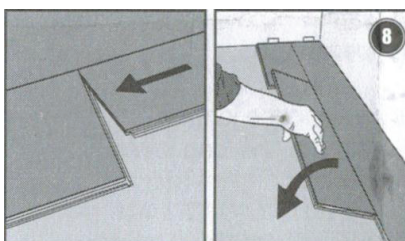
5. Cut with a jig saw
- hardwood turned down or with a hand saw with the hardwood visible.



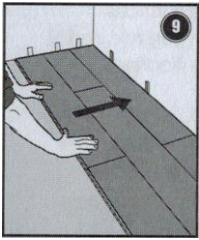
6. Second row
First plank min length 500 mm.
Put a distance against the wall.



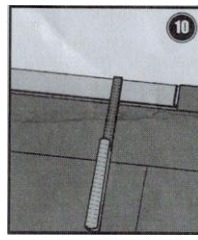
7. General.
Distance between short ends,
Minimum distance between short



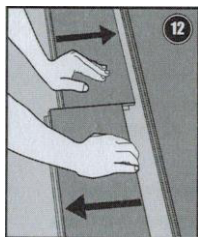
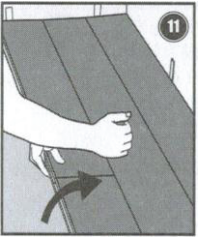
8. Place the panel gently and tight to the short end of the previous panel and fold it down in a single action movement.
During the fold down, make sure the panels are tight against each other.
Afterwards press or slightly knock at the short end just installed.



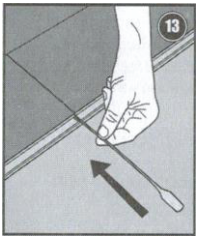
9. After 2-3 rows.
Adjust the distance to the front wall by placing distances of 10 mm.



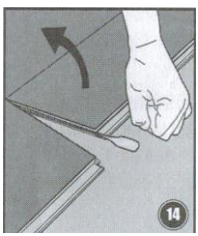
10. Last row (and perhaps also first row).
Minimum width 50 mm. Remember distance to the wall at 10 mm.
Tip! Put a distance before measuring
Cut the panels lengthwise and glue the short ends.



12. Disassemble panels by sliding horizontally.
(Do not fold up)



13. Disassemble with Välinge Release Tool.
Place a special Välinge Release Tool into the joint.



14. Keep the left plank down to the floor and release the right plank - fold it up.

AFTER THE INSTALLATION

You can use the floor immediately after installation.
The skirtings must be fixed to the walls (never to the floor).

Room climate – humidifier or de-humidifier needed?

At all times, the recommended room relative humidity (RH) of 45-60% and temperature of 18-24°C should be kept.
If necessary, install a humidifier/de-humidifier to ensure the best climate for yourself furniture and your floor.
If the climate is not kept or correct installed, by natural properties the floor can show fine gaps, at dry climate also concave (cupping boards) or at RH% convex boards.

Cleaning and maintenance

The lacquered floor should be cleaned by using a vacuum-cleaner (attachment for wood floors) or brushed. If required, wipe with a damp-dry (well squeezed) cloth.

Use a mild soap or similar.
Any water spill accidentally must be wiped off immediately.

For oxidative oiled surfaces we recommend to use maintenance oil right after layment of the new floor in order to impregnate the fibre best (please see instructions on the oil-can) After complete drying of the oil, the floor should be wiped with damp-dry cloth, using a special floor-soap, building up a thin protection-film on the surface. This should always be used when cleaning wet.

Furthermore, the floor can be cleaned with a vacuum-cleaner or brush, similar to lacquered surfaces.

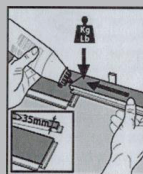
Floor protection furniture, entrances

Stick felt pads to chair and other pieces of furniture legs.
Place doormats at outdoor entrances.

Special installations:

Small panel widths.
No polymer tongue on the short side,
First and/or last row

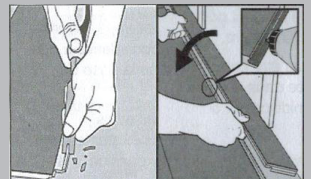
Joining at short ends length cut panels glue the joint with special glue



Horizontal installation

Cut off the locking element with a chisel, push the planks horizontally together.

If necessary, place some distances between the last panel and the wall to keep the planks together during the curing time of the glue.



Radiator pipes

Installation at radiators.
Drill the holes 20 mm larger than the diameter of the pipes.

