

## INSTALLATION GUIDELINES

### Before you start read these Installer/Owner Responsibilities:

Before starting installation, it is important you read all instructions and warranty information. By starting installation of this product you are agreeing that you have read and understand all installer/owner's requirements and responsibilities and are aware that deviating from the instructions and recommendations in this installation guide may result in voiding the product warranty.

Verify colour and finish before installation. Once the floor is installed, it is deemed to have been inspected, approved and accepted.

It is the sole responsibility of the installer/owner, prior to installation, to assure that the planned installation area is suitable for = and meets local building codes. Confirm that all subflooring is dry, sound, flat and meets or exceeds all industry standards/local building codes; as well as the recommendations listed herein. The manufacturer accepts no responsibility for product failure extending from or related to failure to meet job area/environment and subflooring requirements.

The installer/owner assumes full responsibility for the final inspection of this product. Inspection should be done prior to installation and should include: print/colour/texture, factory finish and locking system. If the product is not acceptable, **DO NOT INSTALL IT**. Contact your retailer immediately for assistance. Flooring that has been installed will be deemed to have been inspected and quality accepted.

If you wish to install over a radiant heating system, consult with the manufacturer of your radiant heating system to ensure that it is compatible with = . Temperature must never exceed 26° C (79° F) and changes in temperature settings must be gradual. Rapid temperature changes and/or excessive heat may damage the flooring and/or the finish. It is the responsibility of installer/owner to confirm the suitability of the radiant heating system for use with this product. Any damage to the floor caused by the radiant heating system will not be covered by the product warranty.

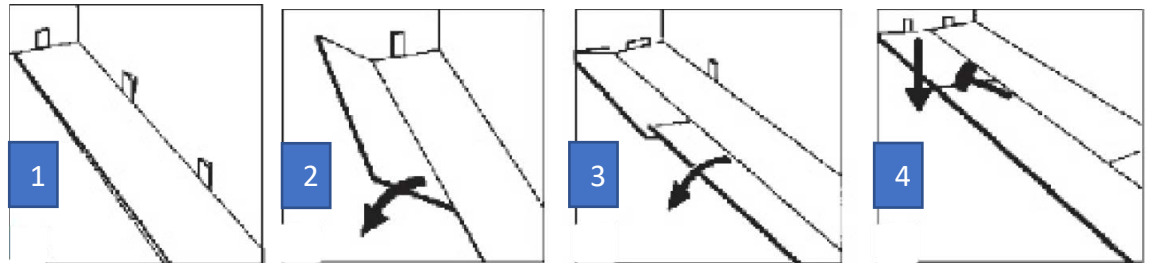
Installations in areas of potential rapid temperature change (solariums, sun-rooms, saunas, etc.) may exceed the temperature limitations of the product and void the product warranty. Verify the temperature fluctuations prior to installation to determine if the area is suitable for = .

Product is rated for indoor use only within the required temperature range, Do not install outdoors.

### Tools required:

Safety glasses  
Mitre saw  
Straight edge  
Chalk-line  
Tape measure  
Pry-bar  
Saw  
Spacers

### Easy Install



#### PRE-INSTALLATION:

When calculating flooring square meter requirements, allow a minimum of an additional 10% for cuts, waste and defects. If installing a diagonal or other special pattern, allow for 15% additional materials.

We recommend you leave the products in its original packaging (straps left on each carton) until time of installation at a temperature of 20°C to 26°C (68°F to 79°F) in the area in which the flooring will be installed. Protect flooring from excessive heat/cold during storage.

#### SUBFLOOR REQUIREMENTS:

All sub-floors must be clean, flat (smooth) and dry prior to installation, regardless of installation method. Floors installed over non-flat subfloors may squeak and/or deflect when walked on. Sweep or vacuum your subfloor immediately prior to installation ensuring there is no debris or grit, as it may interfere with installation.

**Wooden subfloors:** Recommended 15mm plywood, OSB or boards must be flat, high or low areas exceeding 5mm per 3m or 3mm per 2m must be corrected. Sand down high areas, fill low areas. Nail or screw down any loose areas and replace any damaged sheeting (damaged, swollen or delaminating).

**Concrete:** most concrete subfloors (slabs) are not flat (smooth) and must be leveled before installation. In all cases, verify the subfloor using a 2m long straightedge to locate high and low areas, low areas should be filled with a self-leveling compound. The moisture content of the concrete subfloor should not exceed 5%.

**Do not install =** ver soft, rough, non-flat or uneven surfaces.

#### General Tips:

- **COLOUR RACKING:** It is always recommended to draw panels from a minimum of 3 different boxes during installation to assure an even distribution of any minor color variations and slight differences in embossing levels.
- Verify locking profile prior to installing, checking for debris or damage. Clean, trim or discard any affected sections.
- \*Hybrid flooring should not be installed beneath any heavy or fixed furniture or joinery (ie. kitchen benches)

#### CLICK FLOATING GENERAL INSTALLATION INFORMATION:

- For a click floating installation, follow the directives noted above regarding sub-floor preparation.
- Floating installations may be made over most subfloors including: Plywood or OSB, ceramic/porcelain tile, smooth stone, marble, granite, and linoleum. Do NOT install over carpet.
- Important note: For floating installations the maximum run in either direction is 20m. Installation areas exceeding this require the use of a transition

#### ALWAYS STAGGER THE END JOINTS FROM ROW TO ROW BY AT LEAST 20cm.

- Install one panel at a time, so that the end with the large lip is exposed to receive the next plank. Using a sacrificial cut piece with the profile that locks into the large lip end of the panel, gently tap on the sacrificial cut piece until the ends of the panels lock together and repeat for rest of row. Do NOT use too much force when tapping the panels together, as this may damage the locking profile. For final board in row, use a pry-bar to pull it tight and lock the end profiles. Do NOT strike directly on the locking profile to tap the panels together, as this may damage the locking profile.
- In the case where you are unable to angle panels (eg. under a doorframe or radiator), you can cut away the locking edge of the lip of the bottom groove by using a utility knife. Run a bead of Seam Sealer on the now modified tongue and groove. Tighten the panels gently with the use of a pull bar and a hammer.
- If a doorframe must be undercut, lay a panel of flooring next to the doorframe with the patterned side facing down. Undercut the doorjamb with a saw, then slide the flooring panel under the doorjamb with the decorative pattern facing upwards. Please note that the floor must be allowed to expand under the doorjamb and recommended expansion gap must be respected.
- Ensure there is a minimum 6mm gap around the entire floor perimeter and any obstacles. Measure and cut the last panels to fit so that there is a minimum 6mm gap along the last wall.
- Remove all temporary shims, sweep & vacuum immediately.
- Note: You must use an expansion joint strip between rooms. Failure to do so may cause damage to the floor and will void the warranty.

#### FINISHING DETAILS AND MAINTENANCE:

- General cleaning: It is recommended that you sweep & vacuum the area immediately after installation to remove potential damaging grit and debris.
- Further cleaning with an approved pre-finished floor cleaner is also recommended, as required. Please contact retailer for details.
- Do not buff, wax or use cleaning products that contain surfactants.
- Skirtings and scotias: Replace or install new matching skirtings and scotias in all areas. Skirtings are to be nailed into the wall and scotias into the skirtings. DO NOT nail either of these into the Hybrid flooring.
- Transition pieces: If you have removed any transition pieces and not covered their place with Hybrid flooring, reinstall them immediately.
- Furniture & appliances: If you are moving and placing furniture and appliances in areas with Hybrid floors, cover all feet and floor contact points with heavy self-adhesive felt pads to protect the floor. Lift heavy objects when moving (furniture or appliance) DO NOT roll or slide them across the floor.
- We recommend that areas with "rolling loads" (wheelchairs, hospital beds, carts, racks, tables, etc.) should be glued down using a resilient flooring adhesive.
- Felt pads on chair legs should be replaced periodically, as they wear and accumulate grit with use and can damage the floor.
- Outdoor footwear, hard soled shoes and stiletto type heels should not be worn when walking on your Hybrid floor, as they may mark, abrade or otherwise damage the surface and finish of your floor.
- Keep pet nails trimmed, especially dogs, as they may damage the floor.
- Toilet training accidents should be cleaned immediately.

#### LIMITED FLOORING WARRANTY:

25 YEAR LIMITED RESIDENTIAL WARRANTY  
5 YEAR LIMITED COMMERCIAL WARRANTY

(For information regarding our products, please visit our web-site: [www.goldenfield.com.au](http://www.goldenfield.com.au))