

LAYING INSTRUCTION FOR 5G, GLUELESS MECHANICAL LOCKING SYSTEM FOR ENGINEERED HARDWOOD FLOORING

PREPARATION

1. Measure the room, so that the quantity of flooring required is known. If the last board required is too narrow in width, it may be necessary to install length-wise cut boards on both sides of the room to give it an overall balanced look.

The flooring should be given sufficient time to acclimatize by not opening the packaging in the room where they are to be installed.

Each flooring should be inspected to ensure that the quality is acceptable. No claims relating to surface defects can be accepted after installation.

Ensure that the floor will fit under doors and skirting strips. Existing skirting strips may have to be removed during installation to allow for the expansion perimeter.

Ideally, the flooring should be installed along the longest dimension of the room and in a square room, the long joints should follow the path of the incoming light.

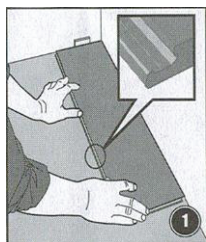
At all times, the temperature in the room should be between 18-24°C and the recommended relative humidity in the room should be in the range of 45-60%. Use a humidifier if the relative humidity drops.

Note: As a natural material, timber is prone to movement with variations in moisture content, heat and relative humidity in the environment. As a guide, please allow the expansion perimeter of the floor gaps to be at least 2mm at each end per running meter of the flooring. For example an 8 meter long floor will need a 16mm expansion joint at each end.

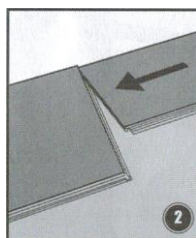
SUBFLOOR

1. Sub-floor surfaces must be dry and level. Suitable surfaces include concrete, particleboard, wood floors, both ceramic and vinyl tiles and possibly others. Please consult your flooring specialist.
2. For uneven floors, compounds must be used to even out abrupt variations. If needed, you may contact your dealer or flooring-layer for further assistance.

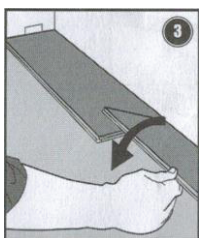
INSTALLATION



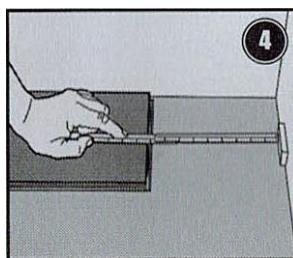
1. First plank, first row.
Place a distance of 10 mm thickness to the left and position the plank against the wall.
After 3 rows have been laid, you can easily position the flooring against the front wall with distances of 10 mm.



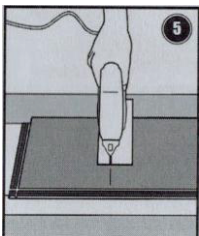
2. Second plank, first row
Place this plank gently and tight to the short end of the first one.



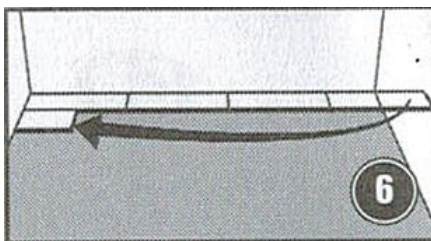
3. Fold the panel down in a single action movement. During the fold down, make sure the panels are tight against each other.
Afterwards press or slightly knock at the short end just installed.



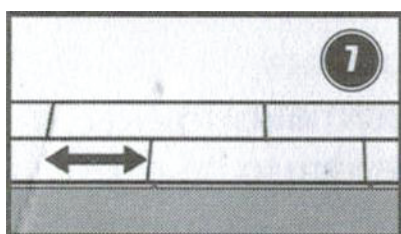
4. At the end of the first row,
Put a distance of 0 mm to the wall and measure the length of the last plank to fit.



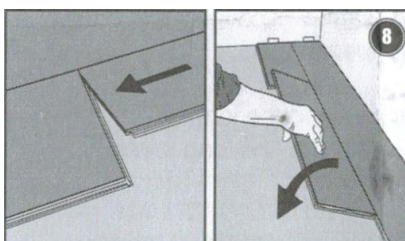
5. Cut with a jig saw
- hardwood turned down or with a hand saw with the hardwood visible.



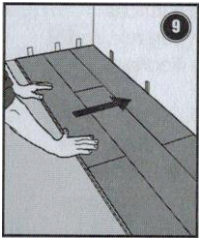
6. Second row
First plank min length 500 mm.
Put a distance against the wall.



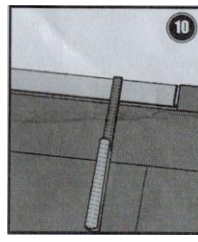
7. General.
Distance between short ends,
Minimum distance between short



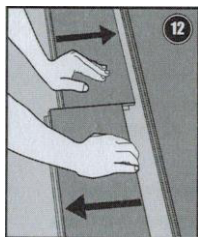
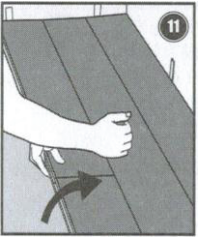
8. Place the panel gently and tight to the short end of the previous panel and fold it down in a single action movement.
During the fold down, make sure the panels are tight against each other.
Afterwards press or slightly knock at the short end just installed.



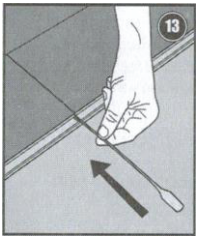
9. After 2-3 rows.
Adjust the distance to the front wall by placing distances of 10 mm.



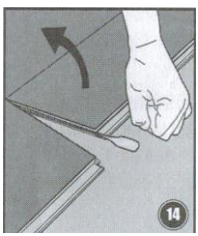
10. Last row (and perhaps also first row).
Minimum width 50 mm. Remember distance to the wall at 10 mm.
Tip! Put a distance before measuring
Cut the panels lengthwise and glue the short ends.



12. Disassemble panels by sliding horizontally.
(Do not fold up)



13. Disassemble with Valinge Release Tool.
Place a special Valinge Release Tool into the joint.



14. Keep the left plank down to the floor and release the right plank - fold it up.

AFTER THE INSTALLATION

You can use the floor immediately after installation.
The skirtings must be fixed to the walls (never to the floor).

Room climate – humidifier or de-humidifier needed?

At all times, the recommended room relative humidity (RH) of 45-60% and temperature of 18-24°C should be kept.
If necessary, install a humidifier/de-humidifier to ensure the best climate for yourself furniture and your floor.
If the climate is not kept or correct installed, by natural properties the floor can show fine gaps, at dry climate also concave (cupping boards) or at RH% convex boards.

Cleaning and maintenance

The lacquered floor should be cleaned by using a vacuum-cleaner (attachment for wood floors) or brushed. If required, wipe with a damp-dry (well squeezed) cloth.

Use a mild soap or similar.
Any water spill accidentally must be wiped off immediately.

For oxidative oiled surfaces we recommend to use maintenance oil right after layment of the new floor in order to impregnate the fibre best (please see instructions on the oil-can) After complete drying of the oil, the floor should be wiped with damp-dry cloth, using a special floor-soap, building up a thin protection-film on the surface. This should always be used when cleaning wet.

Furthermore, the floor can be cleaned with a vacuum-cleaner or brush, similar to lacquered surfaces.

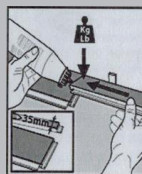
Floor protection furniture, entrances

Stick felt pads to chair and other pieces of furniture legs.
Place doormats at outdoor entrances.

Special installations:

Small panel widths.
No polymer tongue on the short side,
First and/or last row

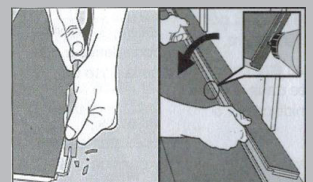
Joining at short ends length cut panels glue the joint with special glue



Horizontal installation

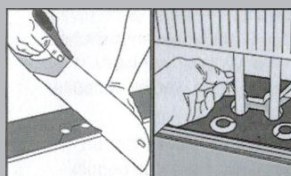
Cut off the locking element with a chisel, push the planks horizontally together.

If necessary, place some distances between the last panel and the wall to keep the planks together during the curing time of the glue.



Radiator pipes

Installation at radiators.
Drill the holes 20 mm larger than the diameter of the pipes.



Installation on Radiant Heated Concrete Slab

All engineered timber floors can be installed using either the floating or direct stick installation method, using an approved adhesive for radiant heating.

When you follow the “installation on Radiant heated concrete slabs” installation instructions, engineered timber flooring is fully covered under warranty for use over radiant heat. However, failure to meet **all** the requirements specified will void the warranty. Please note that in engineered timber flooring moderate surface checking, cracking (especially at board ends and around knots), shrinkage, slight gapping between boards and minor cupping are normal and do not indicate a product failure or defect.

- Only White Oak (European or similar) is approved for use on radiant heat applications. **Do not** use Australian Hardwood or other Exotic hardwood species. Warranty will be voided if anything other than the approved specie or correct installation method is used.
- Radiant heating systems used must be designed by the system manufacturer for hardwood flooring, specifically controlled for hardwood flooring and must include an outside temperature probe and surface temperature controls.
- A moisture test of the flooring must be performed and documented prior to installation.
- At the time of installation, the concrete subfloor must be 18 - 20°C.
- Use an adhesive approved by the system manufacturer for edge and end joins.
- Do not change the radiant heat setting for 48 hours after installation.
- Gradually increase the heat in 2-3°C increments daily to adjust the heating system temperature up or down to allow the flooring to adjust to the temperature changes.
- The maximum temperature of the concrete subfloor under normal use should not exceed 29°C (Check with the heating system manufacturer)
- Check with the heating system manufacturer’s guidelines for the correct water temperature inside the pipes.
- Heating pipes must be covered with 30mm of concrete.
- Room temperature should be maintained between 16-27°C and not vary more than 8°C from season to season.
- Relative humidity must be maintained within the range of 35-55% humidity in the home for radiant heated rooms.
- Always refer to the manufacturer of the radiant heating system for detailed instructions.